

4/2/90

United States Department of the Interior
National Park Service

National Register of Historic Places Registration Form

CLICK HERE for Multiple Property Listing,
"Fraternity and Sorority Houses at the Urbana-
Champaign Campus of the University of Illinois
Multiple Property Submission"

This form is for use in nominating or requesting determinations of eligibility for individual properties or districts. See instructions in *Guidelines for Completing National Register Forms* (National Register Bulletin 16). Complete each item by marking "x" in the appropriate box or by entering the requested information. If an item does not apply to the property being documented, enter "N/A" for "not applicable." For functions, styles, materials, and areas of significance, enter only the categories and subcategories listed in the instructions. For additional space use continuation sheets (Form 10-900a). Type all entries.

1. Name of Property

historic name Kappa Delta Rho Fraternity House
other names/site number Eta Chapter House of Kappa Delta Rho

2. Location

street & number 1110 South Second Street (F42 on MPD key map) N/A not for publication
city, town Champaign N/A vicinity
state Illinois code IL county Champaign code 019 zip code 61820

3. Classification

Ownership of Property	Category of Property	Number of Resources within Property	
<input checked="" type="checkbox"/> private	<input checked="" type="checkbox"/> building(s)	Contributing	Noncontributing
<input type="checkbox"/> public-local	<input type="checkbox"/> district	<u>1</u>	<u> </u> buildings
<input type="checkbox"/> public-State	<input type="checkbox"/> site	<u> </u>	<u> </u> sites
<input type="checkbox"/> public-Federal	<input type="checkbox"/> structure	<u> </u>	<u> </u> structures
	<input type="checkbox"/> object	<u>1</u>	<u>0</u> Total

Name of related multiple property listing:
Fraternity and Sorority Houses at the Urbana-Champaign Campus of the University of Illinois listed in the National Register 0

4. State/Federal Agency Certification

As the designated authority under the National Historic Preservation Act of 1966, as amended, I hereby certify that this nomination request for determination of eligibility meets the documentation standards for registering properties in the National Register of Historic Places and meets the procedural and professional requirements set forth in 36 CFR Part 60. In my opinion, the property meets does not meet the National Register criteria. See continuation sheet.

Signature of certifying official [Signature] Date 3-22-90

State or Federal agency and bureau _____

In my opinion, the property meets does not meet the National Register criteria. See continuation sheet.

Signature of commenting or other official _____ Date _____

State or Federal agency and bureau _____

5. National Park Service Certification

I, hereby, certify that this property is:

entered in the National Register.
 See continuation sheet.

determined eligible for the National Register. See continuation sheet.

determined not eligible for the National Register.

removed from the National Register.

other, (explain:) _____

Signature of the Keeper

Date of Action

6. Function or Use

Historic Functions (enter categories from instructions)

EDUCATION/Education-related housing

Current Functions (enter categories from instructions)

EDUCATION/Education-related housing**7. Description**

Architectural Classification

(enter categories from instructions)

LATE 19TH AND 20TH CENTURY REVIVALSOther: French Eclectic

Materials (enter categories from instructions)

foundation Concretewalls StuccoLimestoneroof Asphaltother Limestone

Describe present and historic physical appearance.

The Kappa Delta Rho Fraternity House is a two and one-half story, French Eclectic style building constructed with stucco over limestone and brick, with limestone detailing. It is situated in a neighborhood near the University of Illinois campus with similar size and type structures, with some larger apartment buildings to the west and several small single family homes to the east, which have been converted for apartment use. Except for minor exterior material replacements and some interior changes to meet building code standards, the historic integrity of the Kappa Delta Rho Fraternity House has been retained. The nomination consists of one contributing building which represents the property type "Fraternity or Sorority House" described in the Multiple Property Listing, "Fraternity and Sorority Houses at the Urbana-Champaign Campus of the University of Illinois."

Exterior

Basically rectangular in plan, but asymmetrically massed, the Kappa Delta Rho Fraternity House faces west toward South Second Street. The building features a steeply pitched hip roof, typical of the French Eclectic style, and a projecting hipped entrance block separating a lower section to the north and a long hipped section to the south, parallel to the street. A square tower with a steeply pitched pyramidal hip roof is attached to the southeast corner and contains a stairwell.

The west facade focuses upon the projecting entrance bay and the front door, which has an ornate, Gothic, basket-handle arch surround constructed of limestone with the fraternity crest carved within it. Above the door is a paired, eight-light, arched casement window with an eight-light circular window above it and a small, third-story, segmental dormer. The facade of the north section has an arched, paired twelve-light casement window with a flat window of the same size above. Almost touching the top of the second story window is a large, segmental arch casement window, which cuts through the slightly overhanging

 See continuation sheet

United States Department of the Interior
National Park Service

National Register of Historic Places
Continuation Sheet

Kappa Delta Rho Fraternity House, Champaign, Champaign Co., IL

Section number 7 Page 2

eaves. The south section of the facade consists of three paired, arched, twelve-light casements with rectangular windows of the same size on the second floor. Decorative iron railings span the openings and lie flush with the walls. On the third floor are three small, round-arched dormers, one with its original eight-light window, the others with single-light replacements in wooden frames. All of the windows on the first and second stories of the west facade have shutters, modern replacements similar to the originals. The roof material is black asphalt shingle.

The fenestration pattern consisting of segmental-arched casements on the first story, flat casements on the second, and segmental-arched dormers on the third continues along the north south elevations. The east (rear) elevation varies from this pattern with rectangular window openings on the first and second stories of the north bay, glass block windows (possibly original) in the cross gable wing, a fire escape (possibly original) and the absence of shutters. Fenestration in the tower section consists of essentially random, single, six-light casement windows.

The walls of the house are brick with a stucco covering and randomly placed cut limestone. The tower is constructed entirely of random ashlar limestone, with a limestone beltcourse with block modillions. All corners of the house, except for several on the east elevation have limestone quoins. The two tall chimneys toward the north and south ends of the building are relatively simple with fallen stucco, which reveals the structural brick and unintentionally adds to the rustic feeling of the exterior.

Interior

Through a wooden front door (probably original) lies a small vestibule. Set into its north wall is a small, wooden box with twin glass doors and a decorative wooden scroll above. The box is no longer used and its original purpose is unknown. The vestibule leads to a low barrel-arched entry hall which runs from north to south. The plaster ceiling is divided into three coffered sections with ornate plaster corbels where each division joins the wall. At the north end of the east wall is a doorway leading to the basement spaces, which have only modern materials visible.

United States Department of the Interior
National Park Service

National Register of Historic Places Continuation Sheet

Kappa Delta Rho Fraternity House, Champaign, Champaign Co., IL

Section number 7 Page 3

A similar doorway to the south leads to a central stairway to the second and third floor dormitory areas. The stairs themselves have been covered with new materials, but the elaborate wrought iron bannister is original. The lower landing area, with its original plaster walls and wood floors, leads to a rear hallway. The hallway accesses several small rooms, including a pool room, which has large, original, wooden cabinets built into the west wall.

At the north end of the entry hall is a low archway with a pair of ten-light French doors leading into a lounge or "office." The lounge has many original elements, including stippled plaster walls and wooden moldings. In the east wall is a doorway to the rear hall, flanked by double-door closets with original wood and hardware.

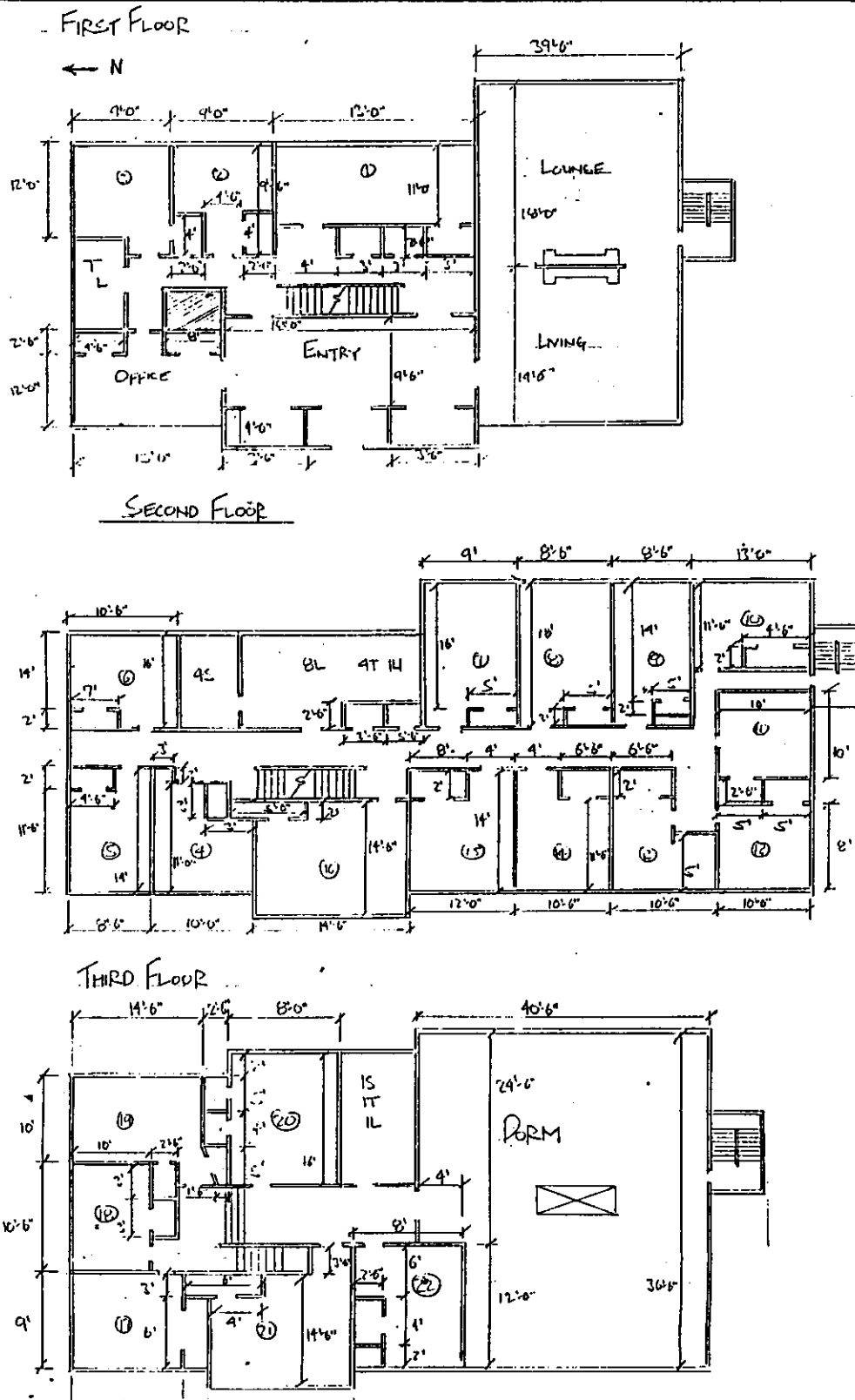
At the south end of the entry hall is another low archway leading to the living room area, which is divided into two major sections by a double sided fireplace. Both sections have original hardwood floors, plaster walls, and beamed ceilings. A series of pairs of arched French doors lines the west room, while ten-light casement windows are in the east half. The fireplace has unusual features including an original lincrusta frieze around the mantle, which depicts various scenes of horsemen carrying lances and banners. The Kappa Delta Rho crest projects from a plaster hood designed to simulate stone blocks. Within the opening is an original copper baffle and original andirons and other equipment. In the south wall of the east living room is a doorway leading to the tower stairwell, which has mostly original materials, including plaster walls and an ornate iron banister.

The upper floor areas contain the sleeping and lounge spaces, and retain the original room configurations and dormitory space. Although the hall ceilings have been dropped with acoustical tile, original plaster walls and wood ceiling molding have been retained in the halls and in the rooms. Most smaller sleeping rooms also retain original closets.

United States Department of the Interior
National Park Service

National Register of Historic Places
Continuation Sheet

Kappa Delta Rho Fraternity House, Champaign, Champaign Co., IL
Section number 7 Page 4



U. Statement of Significance

Certifying official has considered the significance of this property in relation to other properties:

nationally statewide locally

Applicable National Register Criteria A B C D

Criteria Considerations (Exceptions) A B C D E F G

Areas of Significance (enter categories from instructions)

Education
Architecture

Period of Significance

1929 - 1940

Significant Dates

1929

Cultural Affiliation

N/A

Significant Person

N/A

Architect/Bullder

Unknown

State significance of property, and justify criteria, criteria considerations, and areas and periods of significance noted above.

The Kappa Delta Rho Fraternity House is significant as one of the most intact facilities meeting the registration requirements of the property type "Fraternity or Sorority House" as defined in the approved Multiple Property Documentation Form, Fraternity and Sorority Houses at the Urbana-Champaign Campus of the University of Illinois. The Kappa Delta Rho Fraternity House is an excellent representation of the Greek Letter Society movement at the Urbana-Champaign campus of the University of Illinois, which by 1928 was the largest such movement in the nation. The fraternity and sorority houses spawned by this movement contributed much to the broad patterns of higher education on the Urbana-Champaign campus by becoming the predominant form of organized student housing on campus, by providing a setting for social growth and leadership, and by reflecting the enduring American interest in classical culture (Criterion A). Integrity of design has been maintained with no exterior additions or significant changes in materials, except for replacement shutters. Few changes have been made to the interior other than minor material modifications on the upper stories. Many unusual interior features remain intact and in supurb condition. The Kappa Delta Rho Fraternity House is also significant architecturally, being an excellent example of the French Eclectic style and the finest example of this style among Greek houses at the Illinois campus (Criterion C). As part of an active fraternity on the University of Illinois campus, the significance of the Kappa Delta Rho Fraternity House continued until 1940, the arbitrary 50-year cut-off date.

See continuation sheet

United States Department of the Interior
National Park Service

National Register of Historic Places Continuation Sheet

Kappa Delta Rho Fraternity House, Champaign, Champaign Co., IL

Section number 8 Page 2

Eta Chapter of Kappa Delta Rho

Kappa Delta Rho fraternity was founded at Middlebury College, Vermont, in 1905. A large group of independent students had developed at Middlebury since no new fraternity had been established there since 1856. Unsatisfied with loosely formed independents' organizations, a group of students formed Kappa Delta Rho with an emphasis on brotherhood rather than athletic or academic excellence. The fraternity remained local until 1913, when a chapter was established at Cornell University.

In 1921 the Eta Chapter of Kappa Delta Rho was established at the University of Illinois. A prominent member from this early period was Harold Osborn (class of 1922), who set a world record for the high jump. In 1929 construction was completed on a \$75,000 home for the Eta Chapter at 1110 Williamson (now Second Street) in Champaign. While in this house, Kappa Delta Rho members were involved with many University activities. Athletes included track team member, Jack Degette (class of 1933); baseball team member, Elmer Mundt (class of 1934); and football lineman, Bob Bloom (class of 1934), who played on Bob Zuppke's 1932 team. Other active members included Bob Hodgman (class of 1931), chairman of the university Activities Supervision Committee; the Business Manager of the Daily Illini; several ROTC participants; and students holding positions with the Illini Union.

Architecture

The Kappa Delta Rho Fraternity House is a good example of French Eclectic architecture. The French Eclectic style became popular after American soldiers were exposed to French architecture during World War I, and was further popularized by the publication of photographic studies of small French houses. The style flourished, particularly in early suburban areas, until the end of World War II. (1)

The Kappa Delta Rho Fraternity House has a number of exterior French Eclectic features, including: a steeply-pitched hipped roof with flared eaves; varied eave-line heights; stucco wall cladding; an elaborate limestone basket-handle door surround; a stair tower; circular and arched roof dormers; and full-length casement windows with shutters. Interior features such as coffered ceilings, wrought iron bannister, French doors, and a fireplace embellished with a lyncrasta frieze add significance to

United States Department of the Interior
National Park Service

**National Register of Historic Places
Continuation Sheet**

Kappa Delta Rho Fraternity House, Champaign, Champaign Co., IL

Section number 8 Page 3

the building's design. The asymmetrical massing and the use of mixed wall cladding materials give the building a picturesque quality, clearly separating it from the more formal Chateausque and French Renaissance styles.

Endnotes

(1) Virginia and Lee McAlester, A Field Guide to American Houses (New York: Alfred A. Knopf, 1984), pp. 387-388.

The Eta Survey. March 1931, April 1932, December 1932, May 1933, March 1937.

Illinois Alumni News. Vol. 10, No. 5; Vol. 7, No. 1.

McAlester, Virginia and Lee. A Field Guide to American Houses. New York: Alfred A. Knopf, 1984.

See continuation sheet

- Previous documentation on file (NPS): N/A
- preliminary determination of individual listing (36 CFR 67) has been requested
 - previously listed in the National Register
 - previously determined eligible by the National Register
 - designated a National Historic Landmark
 - recorded by Historic American Buildings Survey # _____
 - recorded by Historic American Engineering Record # _____

Primary location of additional data:

- State historic preservation office
- Other State agency
- Federal agency
- Local government
- University
- Other

Specify repository: _____

10. Geographical Data

Acreage of property Less than one acre.

UTM References

A

1	6
3	9
4	5
3	0

4	4
3	9
8	9
0	

Zone Easting Northing

B

Zone Easting Northing

C

D

See continuation sheet

Verbal Boundary Description

Lots 38 and 39 of College Place Subdivision; west 1/2 of the southwest 1/4 of Section 18; Township 19N, Range 9E ; Champaign County, Illinois.

See continuation sheet

Boundary Justification

The boundary includes the entire city lot that has historically been associated with the property.

See continuation sheet

11. Form Prepared By

name/title Brian Kolde/ Preservation Planner
 organization The URBANA Group, Inc. date January 1990
 street & number 110 S. Race St., P.O. Box 1028 telephone (217) 344-7526
 city or town Urbana state IL zip code 61801-9028

The Director of the National Park Service is pleased to inform you that the following properties have been entered in the National Register of Historic Places. For further information call 202/343-3542.

WEEKLY LIST OF LISTED PROPERTIES
5/21/90 THROUGH 5/25/90

JUN 0 1 1990

KEY: Property Name, Multiple Name, Address/Boundary, City,
Vicinity, Certification Date, Reference Number, NHL status

FLORIDA

Marion County
Smith, E. C., House
507 NE. 8th Ave.
Ocala 5/24/90 90000806

GEORGIA

Carroll County
McDaniel--Huie Place
1238 SR 166 W.
Bowdon vicinity 5/24/90 90000803

Fulton County

Rock Spring Presbyterian Church
1824 Piedmont Ave. NE.
Atlanta 5/24/90 90000804

ILLINOIS

Champaign County

Alpha Delta Phi Fraternity House
Fraternity and Sorority Houses at the Urbana-Champaign Campu
s of the University of Illinois NPS
310 E. John St.
Champaign 5/21/90 90000752

Delta Upsilon Fraternity House

Fraternity and Sorority Houses at the Urbana-Champaign Campu
s of the University of Illinois NPS
312 E. Armory Ave.
Champaign 5/21/90 90000749

Kappa Delta Rho Fraternity House

Fraternity and Sorority Houses at the Urbana-Champaign Campu
s of the University of Illinois NPS
1110 S. Second St.
Champaign 5/21/90 90000750

Pi Mu Sorority House

Fraternity and Sorority Houses at the Urbana-Champaign Campu
s of the University of Illinois NPS
706 W. Ohio St.
Urbana 5/21/90 90000751

INDIANA

Carroll County
Foreman--Case House
312 E. Main St.
Delphi 5/24/90 90000811

Hamilton County

Craig, William Houston, House
1250 E. Conner St.
Noblesville 5/24/90 90000808

Monroe County

Control Wax Company Building
211 W. Washington St.
Bloomington 5/24/90 90000812

Randolph County

Kirschbaum, Raphael, Building
NW corner of Columbia and W. Pearl Sts.
Union City 5/24/90 90000813

Rush County

Washington, Booker T., School
614 Fort Wayne Rd.
Rushville 5/24/90 90000809

Tippecanoe County

Upper Main Street Historic District
Roughly bounded by Ferry St., 6th St., Columbia St., and the
Norfolk and Western Railroad tracks
Lafayette 5/24/90 90000814

LOUISIANA

St. Charles Parish
Dorvin House
SR 18 NW of Hahnville
Hahnville vicinity 5/24/90 90000799

MICHIGAN

Genesee County
Genesee County Courthouse and Jail
920 S. Saginaw St.
Flint 5/24/90 90000798

St. Clair County

St. Clair Flats South Channel Range Lights
0.6 mi. W of southern tip of Marsens Island
Algonac vicinity 5/24/90 90000853

NEW YORK

Ontario County

Clifton Springs Sanitarium Historic District
E. Main St. between Crane and Prospect
Clifton Springs 5/24/90 90000818

Otsego County

Swart--Wilcox House
Jct. of Wilcox Ave. and Henry St.
Oneonta 5/24/90 90000817

NORTH CAROLINA

Edgecombe County

Jornley--Burnette House
SR 1526 N of jct. with SR 1540
Conetoe vicinity 5/24/90 90000791

PUERTO RICO

San German Municipality

Jaine Acosta y Flores Residence
Calle Dr. Santiago Veve, 70
San German 5/24/90 90000757

UTAH

Utah County

Ripine LDS Church Meetinghouse
Mormon Church Buildings in Utah NPS
50 N. Main
Ripine 5/24/90 90000794

VERMONT

Orange County

Hart--Castle
41 S. Main St.
Randolph 5/24/90 90000796

Windham County

Hilldean and Alexander--Davis House
Main St. near town center
Srafton 5/24/90 90000815

Windsor County

Stockbridge Common Historic District
Area around Stockbridge Common, including Applewood Cemetery
Stockbridge 5/24/90 90000790

Multiple Resource Areas are identified by MRA
Multiple Property Submissions are identified by MPS
Thematic Resources are identified by TR
NHL designates a National Historic Landmark

The following actions have been taken on the following properties:

KEY: Property Name, Multiple Name, Address/Boundary, City,
Vicinity, Reference Number, NHL status, Requested Action, Decision Date

TENNESSEE

Warren County

McMinnville Hydroelectric Station
Pre-NR Hydroelectric Development in Tennessee, 1901-1933 M
PS
State Route 55 Bypass at Barden Fork River
McMinnville 90000807
ADDITIONAL IDENTIFICATION 5/24/90

VERMONT

Windsor County

Bethel Village Historic District (Boundary Increase)
SR 107 across the White R. and N to Central Vermont Railway
tracks
Bethel 90000797
BOUNDARY INCREASE 5/24/90