

United States Department of the Interior
National Park Service

SENT TO D.C.

10-4-96

NATIONAL REGISTER OF HISTORIC PLACES
REGISTRATION FORM

This form is for use in nominating or requesting determinations for individual properties and districts. See instructions in How to Complete the National Register of Historic Places Registration Form (National Register Bulletin 16A). Complete each item by marking "x" in the appropriate box or by entering the information requested. If any item does not apply to the property being documented, enter "N/A" for "not applicable." For functions, architectural classification, materials, and areas of significance, enter only categories and subcategories from the instructions. Place additional entries and narrative items on continuation sheets (NPS Form 10-900a). Use a typewriter, word processor, or computer, to complete all items.

=====

1. Name of Property

=====

historic name Hunter, Lucinda, House

other names/site number _____

=====

2. Location

=====

street & number 101 East Eighth Street not for publication _____
city or town Vermont vicinity _____
state Illinois code IL county Fulton code 057 zip code 61484

=====

3. State/Federal Agency Certification

=====

As the designated authority under the National Historic Preservation Act of 1986, as amended, I hereby certify that this nomination _____ request for determination of eligibility meets the documentation standards for registering properties in the National Register of Historic Places and meets the procedural and professional requirements set forth in 36 CFR Part 60. In my opinion, the property meets _____ does not meet the National Register Criteria. I recommend that this property be considered significant _____ nationally _____ statewide locally. (_____ See continuation sheet for additional comments.)

William L. Wheel / SHPO
Signature of certifying official

10-1-96
Date

Illinois Historic Preservation Agency
State or Federal agency and bureau

In my opinion, the property _____ meets _____ does not meet the National Register criteria. (_____ See continuation sheet for additional comments.)

Signature of commenting or other official Date

State or Federal agency and bureau

4. National Park Service Certification

I, hereby certify that this property is:

entered in the National Register _____
 See continuation sheet.
 determined eligible for the National Register _____
 See continuation sheet.
 determined not eligible for the National Register _____
 removed from the National Register _____
 other (explain): _____

_____ Signature of Keeper _____ Date of Action

5. Classification

Ownership of Property (Check as many boxes as apply)

- private
- public-local
- public-State
- public-Federal

Category of Property (Check only one box)

- building(s)
- district
- site
- structure
- object

Number of Resources within Property

Contributing	Noncontributing	
1	0	buildings
0	0	sites
0	0	structures
0	0	objects
1	0	Total

Number of contributing resources previously listed in the National Register N/A

Name of related multiple property listing (Enter "N/A" if property is not part of a multiple property listing.) Architectural and Historic Resources of Vermont, Illinois

significant and distinguishable entity whose components lack individual distinction.

D Property has yielded, or is likely to yield information important in prehistory or history.

Criteria Considerations (Mark "X" in all the boxes that apply.)

A owned by a religious institution or used for religious purposes.

B removed from its original location.

C a birthplace or a grave.

D a cemetery.

E a reconstructed building, object, or structure.

F a commemorative property.

G less than 50 years of age or achieved significance within the past 50 years.

Areas of Significance (Enter categories from instructions)

Architecture

Period of Significance c. early 1870s

Significant Dates N/A

Significant Person (Complete if Criterion B is marked above)
N/A

Cultural Affiliation N/A

Architect/Builder Unknown

Narrative Statement of Significance (Explain the significance of the property on one or more continuation sheets.)

=====

9. Major Bibliographical References

=====

(Cite the books, articles, and other sources used in preparing this form on one or more continuation sheets.)

Previous documentation on file (NPS)

preliminary determination of individual listing (36 CFR 67) has been requested.

previously listed in the National Register

previously determined eligible by the National Register

designated a National Historic Landmark

recorded by Historic American Buildings Survey # _____

recorded by Historic American Engineering Record # _____

Primary Location of Additional Data

State Historic Preservation Office

Other State agency

Federal agency

Local government

University

Other

Name of repository: Vermont Public Library

=====

10. Geographical Data

=====

Acreage of Property less than one

UTM References (Place additional UTM references on a continuation sheet)

	Zone	Easting	Northing	Zone	Easting	Northing
1	15	718690	4462990	3	_____	_____
2	_____	_____	_____	4	_____	_____

_____ See continuation sheet.

Verbal Boundary Description (Describe the boundaries of the property on a continuation sheet.)

Boundary Justification (Explain why the boundaries were selected on a continuation sheet.)

=====

11. Form Prepared By

=====

name/title David Newton, President, Louise McCurdy, Harold McCurdy

organization Vermont Betterment, Inc.

date June 4, 1996

street & number Box 275

telephone 309-784-2414

city or town Vermont

state IL

zip code 61484

=====

Additional Documentation

=====

Submit the following items with the completed form:

Continuation Sheets

Maps

A USGS map (7.5 or 15 minute series) indicating the property's location.
A sketch map for historic districts and properties having large acreage or numerous resources.

Photographs

Representative black and white photographs of the property.

Additional items (Check with the SHPO or FPO for any additional items)

Property Owner

(Complete this item at the request of the SHPO or FPO.)

name Louise McCurdy

street & number Box 203

telephone 309-784-2892

city or town Vermont

state IL zip code 61484

Paperwork Reduction Act Statement: This information is being collected for applications to the National Register of Historic Places to nominate properties for listing or determine eligibility for listing, to list properties, and to amend existing listings. Response to this request is required to obtain a benefit in accordance with the National Historic Preservation Act, as amended (16 U.S.C. 470 et seq.).

Estimated Burden Statement: Public reporting burden for this form is estimated to average 18.1 hours per response including the time for reviewing instructions, gathering and maintaining data, and completing and reviewing the form. Direct comments regarding this burden estimate or any aspect of this form to the Chief, Administrative Services Division, National Park Service, P.O. Box 37127, Washington, DC 20013-7127; and the Office of Management and Budget, Paperwork Reductions Project (1024-0018), Washington, DC 20503.

United States Department of the Interior
National Park Service

NATIONAL REGISTER OF HISTORIC PLACES
CONTINUATION SHEET

Section 7 Page 1 Hunter, Lucinda, House
 name of property
 Fulton County, Illinois
 county and State
 Architectural and Historic Resources of Vermont
 name of multiple property listing

=====

Description

Summary

The Lucinda Hunter House is a two-story frame, Gable Front, Side-Hall plan residence built circa early 1870s. It is located on the southeast corner of South Main and East Eighth Street in the village of Vermont, in southwestern Fulton County, Illinois. The house faces north towards East Eighth Street. It has some Greek Revival details including its elaborate front entry with transoms and sidelights. It also has Italianate details including its segmental arched windows with wood hood molds, main staircase newel post, and interior woodwork. The house has a medium pitched gabled roof that is covered with asphalt shingles. It has a brick foundation and narrow wood clapboard siding. A single brick chimney rises from the center of the house. A decorative one-story wood porch with jigsawn columns, flattened, pointed arches, and small brackets extends across the front of the house. The lot is basically level and is landscaped with some ornamental trees, bushes, and perennials. The neighborhood is characterized as residential. The downtown business district is five blocks to the north. To the south of the house is a c. 1860s gable front house that has been covered with asphalt siding. To the east is a hall and parlor house with synthetic siding. To the north, across East Eighth Street is a small hall and parlor house that has been sided with synthetic siding. West, across South Main Street are late 19th century frame houses.

Originally the house was rectangular shaped with an one-story kitchen ell to the southeast. In c. 1900, Dr. Columbus McCurdy had a one story addition placed between the kitchen ell and main house block in the northeast. This room was possibly used as his doctor's office for some time. In 1948 Harold W. McCurdy and his wife, Louise N. (Way) McCurdy, had the small south rear porch enclosed. These additions in no way detract from the house as they are small in scale and the front gabled portion of the house is clearly evident.

Exterior

The north front facade of the house beginning at the east end of the first story has a one-over-one window in the c. 1900 addition. To the west are two, long four-over-six windows and the front entry door. The front entryway has a three-light transom with three-light sidelights on either side of the wood six-panel entry door. A protective glass and aluminum

United States Department of the Interior
National Park Service

NATIONAL REGISTER OF HISTORIC PLACES
CONTINUATION SHEET

Section 7 Page 2 Hunter, Lucinda, House
name of property
Fulton County, Illinois
county and State
Architectural and Historic Resources of Vermont
name of multiple property listing
=====

storm door covers the front door. Above on the second story are three, four-over-four windows.

Towards the south end of the first story west elevation is a one-over-one window that replaced a four-over-four window at an unknown date. Above on the second story are two, four-over-four windows.

Beginning at the west end of south elevation first story is a one-over-one window that replaced a four-over-four window at an unknown date. To its east is a small one-over-one window that was installed in the former pantry in 1948. Above on the second story are two, four-over-four windows.

The west wall of the enclosed south porch has two, one-over-one windows. On the south wall are two, one-over-one windows and a metal and glass storm door. On the east wall is a one-over-one window.

The east elevation first story of the kitchen ell has two small one-over-one windows that replaced a four-over-four window when the kitchen was updated in the late 1940s. To the north in the c. 1900 addition are two, one-over-one windows. Toward the south end on the second story is a one-over-one window and toward the north end is a four-over-four window. A small basement window is located in the kitchen ell.

Interior

The interior is a typical of a side-hall plan house with rooms located off of the entry hall. Woodwork throughout the main part of the house is Italianate in style. Floors are four inch wide pine planks. Most of the floors have been covered with carpeting.

The 7' 6" x 15" entry hall has the main staircase located on the west wall. It has a walnut Italianate newel post with walnut balusters. To the east through a four-paneled wood door is the 13' 6" x 15' parlor. The parlor has two large windows that extend down to the floor along the north wall. Above the windows are small decorative wood panels. A large flat arched opening to the east provides access to a bedroom. On the south wall is a four-panel wood door to the dining room.

United States Department of the Interior
National Park Service

NATIONAL REGISTER OF HISTORIC PLACES
CONTINUATION SHEET

Section 7 Page 3 Hunter, Lucinda, House
name of property
Fulton County, Illinois
county and State
Architectural and Historic Resources of Vermont
name of multiple property listing

=====

The 13' 6" x 15' 3" dining room in the southwest part of the house has a window on the both the south and west walls that provide light to the room. The kitchen to the east has a wood chair rail around the room. A small bathroom which was converted from a pantry in 1948 is located south of the kitchen. To the southeast of the kitchen is the enclosed south porch and basement stairs.

The c. 1900 addition is currently used as a bedroom. The room was possibly used as Dr. McCurdy's office. The woodwork in this room has plain wood boards.

Fifteen steps lead up to a landing towards the south on the second story. The balustrade continues around the east side of the staircase on the second story. Three large bedrooms to the north, southeast, and southwest open onto the stairhall. All four doors to the bedrooms and storage room have two vertical panels. There is a small storage room above the front entry in the northwest corner.

United States Department of the Interior
National Park Service

NATIONAL REGISTER OF HISTORIC PLACES
CONTINUATION SHEET

Section 8 Page 4 Hunter, Lucinda, House
name of property
Fulton County, Illinois
county and State
Architectural and Historic Resources of Vermont
name of multiple property listing

=====

Statement of Significance

The Lucinda Hunter House is locally significant for Criterion C for architecture for listing in the National Register of Historic Places. The house is a good example of a Side-Hall plan Gable Front residence built in the early 1870s. The house has Greek Revival features including its elaborate entry with transom and sidelights. It also has Italianate features including its segmental arched windows with wood hood molds, main staircase newel post, and interior woodwork. The front porch has Gothic Revival styled flattened, pointed arches. The period of significance is c. early 1870s when the house is believed to have been built. The Lucinda Hunter House meets the registration requirements of the single dwelling property type in the Multiple Property Documentation Form "Architectural and Historic Resources of Vermont, Illinois."

For a discussion of vernacular or popular housing types including side hall plan and front gabled houses, please refer to the Multiple Property Documentation Form "Architectural and Historic Resources of Vermont, Illinois." The Lucinda Hunter House is a good example of a Side Hall plan and Gable Front form vernacular type.

The Side Hall plan vernacular type is characterized by its plan. Popular from the 1840s to the 1890s the most recognizable feature is the entrance located in the far left or right bay, usually with a two or three bay facade. Side Hall plan houses may be one-and-one-half or two stories in height. The type may have a variety of roof forms including hipped, side-gabled or gable front. The house type may also be a version of the Gable Front type, depending on its roof form. The Lucinda Hunter House is an excellent example of this type. Many Side Hall plan homes in Vermont are also a Gable Front type. Two rooms deep and one room wide, the side hall of these buildings contains a staircase immediately behind the front entry to access the upper story. Greek Revival and Italianate features may be found on this building type in Vermont. The Lucinda Hunter House is an excellent example of a Side Hall plan. It has an entry located to the far west side of the house with a parlor and dining room opening off to the side of the hall.

Other Side Hall plan types in Vermont include the Stephens House at 103 South Main which is an earlier version of a Side Hall plan house in Vermont. Although it has been clad with asbestos siding and the entry porch has been enclosed, the house dates to c. early 1850s, and is among the oldest dwellings in town; it continues to reflect its form with some

United States Department of the Interior
National Park Service

NATIONAL REGISTER OF HISTORIC PLACES
CONTINUATION SHEET

Section 8 Page 5 Hunter, Lucinda, House
name of property
Fulton County, Illinois
county and State
Architectural and Historic Resources of Vermont
name of multiple property listing

=====

degree of integrity. The two story, wood frame house, has a side-gabled roof, two bay front facade, cornice returns, and a two story rear wing.

An excellent two story brick Side Hall plan house is located at 301 West South First. The c. 1850s house has a simple brick classical inspired cornice, side-gable roof, and three bay facade. Unfortunately an enclosed front porch covers the view of the entry door and the house has numerous later rear and side additions.

The Elwood Sidwell House at 706 North Main is an excellent example of both a Side Hall plan house and Gable Front type in Vermont. Built in the mid-1870s, it unfortunately has been covered with asbestos siding and a large two story garage has been attached to the rear, but it still retains a great degree of integrity reflecting its plan and stylistic detailing. The home has both Greek Revival and Italianate details. Greek Revival details include its elaborate entry with transom and sidelights. Italianate details include its window bay with segmental window hoods, segmental hood moldings, and its tall four-over-four and six-over-four windows.

Gable Front vernacular houses were popular from the 1850s through the 1920s. The Gable Front house can be one, one-and-a-half, or two stories in height. The type is characterized by its front facing gable towards the street and gable roof ridgeline running perpendicular to the street. Earlier Gable Front houses were inspired by Greek temple forms and often have a side-hall plan. Many earlier Gable Front houses had Greek Revival or Italianate details. Later Gable Front houses had Queen Anne or Classical Revival details. In the 1910s and 1920s, many Gable Front houses had Craftsman details.

Gable Front houses in Vermont were constructed from the 1860s through the 1930s and have a variety of stylistic details. Among the earlier Gable Front types in town is the Greek Revival styled Milton I. Amrine House at 208 East Fourth Street. The two story frame house built 1864 has a side-hall plan but has been covered with metal siding and the front porch has been updated. It has a two bay front facade fenestration pattern with an elaborate entry with transom and sidelights. To the east of the entry is a four-window bay window.

Immediately to the south of the Lucinda Hunter House at 507 South Main is a Side Hall plan, Gable Front house. Built c. 1870s, the two-story wood frame house has a two bay

United States Department of the Interior
National Park Service

NATIONAL REGISTER OF HISTORIC PLACES
CONTINUATION SHEET

Section 8 Page 6 Hunter, Lucinda, House
name of property
Fulton County, Illinois
county and State
Architectural and Historic Resources of Vermont
name of multiple property listing

=====

front facade fenestration pattern. The house has tall, narrow, two-over-two windows. It has been covered with asphalt siding, the porch has been updated, and a large addition extends to the northwest past the front of the house.

At 304 South Union Street is a Side Hall plan, Gable Front house. Built c. 1870s, the two-story wood frame house has a two bay front facade fenestration pattern. The house has some six-over-six windows. It has been covered with asphalt siding and the front porch has been removed. There is also a large modern addition to the south of the main house.

At 404 West Fifth Street is a Side Hall plan, Gable Front house built c. 1860s. The two-story wood frame house has a two bay front facade fenestration pattern. The house has an elaborate entry with sidelights and transom. In the early 1900s the front porch was updated with classical inspired columns and some decorative shingles. In 1994-1995 the house was covered with synthetic siding, a large picture window was installed, and some of the windows were replaced with smaller one-over-one windows.

At 806 North Main Street is a Gable Front house built c. 1880s-1890s. The house has a central entry with rooms to either side. There are decorative vergeboards at the gable ends. The house has been covered with metal siding and the porch has newer metal supports.

There are some later Gable Front houses built in Vermont from the 1890s on. These houses reflect Queen Anne, Classical, and Craftsman styles and are not comparable to the earlier Lucinda Hunter House built in the c. early 1870s.

History

Lucinda Hunter was born in Kentucky around 1814-1815 and was the wife of James Hunter. In the late 1840s, James and Lucinda Hunter and their family moved to Vermont stopping in Atlanta, Illinois for a few years. The family walked the complete journey and drove several head of livestock with them. James Hunter established a tannery and leather business in Vermont. They had several children of which John Hiram Hunter was the eldest son. On July 9, 1849, James Hunter died at the age of 38.

John Hiram Hunter became a clerk in a store to support his mother and younger sisters and

United States Department of the Interior
National Park Service

NATIONAL REGISTER OF HISTORIC PLACES
CONTINUATION SHEET

Section 8 Page 7 Hunter, Lucinda, House
 name of property
 Fulton County, Illinois
 county and State
 Architectural and Historic Resources of Vermont
 name of multiple property listing

=====

brothers after his father's death. In 1864 he was elected town clerk. In the Civil War, he volunteered and was paid to take another draftee's place and left for the 34th Illinois Infantry in 1864. He was soon promoted to lieutenant and was part of William Sherman's army during the Georgia campaign. After the war, Hunter returned to Vermont and was a clerk for Joab Mershon and Caleb B. Cox in their general merchandise firm. In the late 1860s he was appointed as Vermont's postmaster. It is believed that Lucinda Hunter had this residence built in the early 1870s and it is known that John Hiram Hunter also lived at this residence. Land transfers show that Lucinda Hunter purchased the lots the house sits on in 1871 from Harvey Lee Ross, a businessman and merchant who lived two blocks south of this residence. John Hiram Hunter continued to live in Vermont until 1879 when he moved to Table Grove and opened a general merchandise store.

In the 1870 Federal Census of Vermont, Lucinda Hunter was listed as a seamstress. Lucinda Hunter continued to live at the house until 1884 when it was sold to Ansel Amrine.¹ Ansel Amrine was a farmer and owned the grain elevator near the depot on the southeast part of town. Later the house was owned by W. H. Amrine. In 1900 the home was sold to Dr. Columbus McCurdy.

Dr. Columbus McCurdy was born on May 29, 1844 in McDonough County near Vermont. He was the son of Alexander and Eliza (Renner) McCurdy, a miller. Alexander McCurdy had emigrated to McDonough County from Virginia. In 1843 he was married to Eliza Renner. Columbus McCurdy attended a private school at the Presbyterian Church in Vermont receiving some rudimentary education. In 1865 he began teaching at Freeman School, a one-room school northeast of Vermont. He later studied medicine with Dr. Taylor and Dr. Clark. In the early 1870s Columbus McCurdy attended the Eclectic Medical College in Cincinnati, Ohio and graduated in 1873 with a medical degree. He also attended medical lectures in St. Louis, Missouri. He established a medical practice in Summun, Illinois before returning to Vermont to establish a medical practice in the late 1870s.²

In 1873 he was married to Caroline Freeman a daughter of Marshall Freeman. After her death he married Clara B. Hamilton and they had one son, Harold W. McCurdy. Dr. McCurdy erected the McCurdy Building at 208-210 North Main Street (the storage rooms for the Dip-It-Shop) in 1891. He also owned several business buildings in town. In 1894 he built his office building at 101 North Main Street (the Vermont Public Library). During

United States Department of the Interior
National Park Service

NATIONAL REGISTER OF HISTORIC PLACES
CONTINUATION SHEET

Section 8 Page 8 Hunter, Lucinda, House
name of property
Fulton County, Illinois
county and State
Architectural and Historic Resources of Vermont
name of multiple property listing
=====

Doctor McCurdy's residence in this house there was a barn where he kept his horse and buggy, and two sheds. The barn and sheds were torn down at an unknown date.

After Dr. Columbus McCurdy's death in 1922, Clara became a teacher at the Flat Woods School located southeast of Vermont in Schuyler County. She was also a nurse practitioner.

Harold W. McCurdy, Columbus and Clara's son, was married to Louise N. Way in 1934. Harold was an accountant in Galesburg and they moved to Glendale, Arizona in 1934. In Glendale, Harold worked as an accountant at Luke Air Force Base while Louise ran a lunch stand across from the Glendale School. Louise also worked at Goodyear Aircraft in Phoenix during World War II assembling navy bombers. They returned to Vermont in 1946 after the war, and Harold became an accountant at the Ken-Ray Foundry. Louise N. McCurdy, the owner, continues to reside in the house today. Harold W. and Louise N. McCurdy had one son, Harold McCurdy, who resides in Vermont with his wife, Helen.

Endnotes

1. Fulton County Ledger, March 27, 1884. Canton, Illinois. Vermont correspondence.
2. Chapman, Charles C. History of Fulton County. Peoria, Illinois: J. W. Franks and Sons, 1879. p. 923.

United States Department of the Interior
National Park Service

NATIONAL REGISTER OF HISTORIC PLACES
CONTINUATION SHEET

Section 9, 10 Page 9 Hunter, Lucinda, House
 name of property
 Fulton County, Illinois
 county and State
 Architectural and Historic Resources of Vermont
 name of multiple property listing

=====

Bibliography

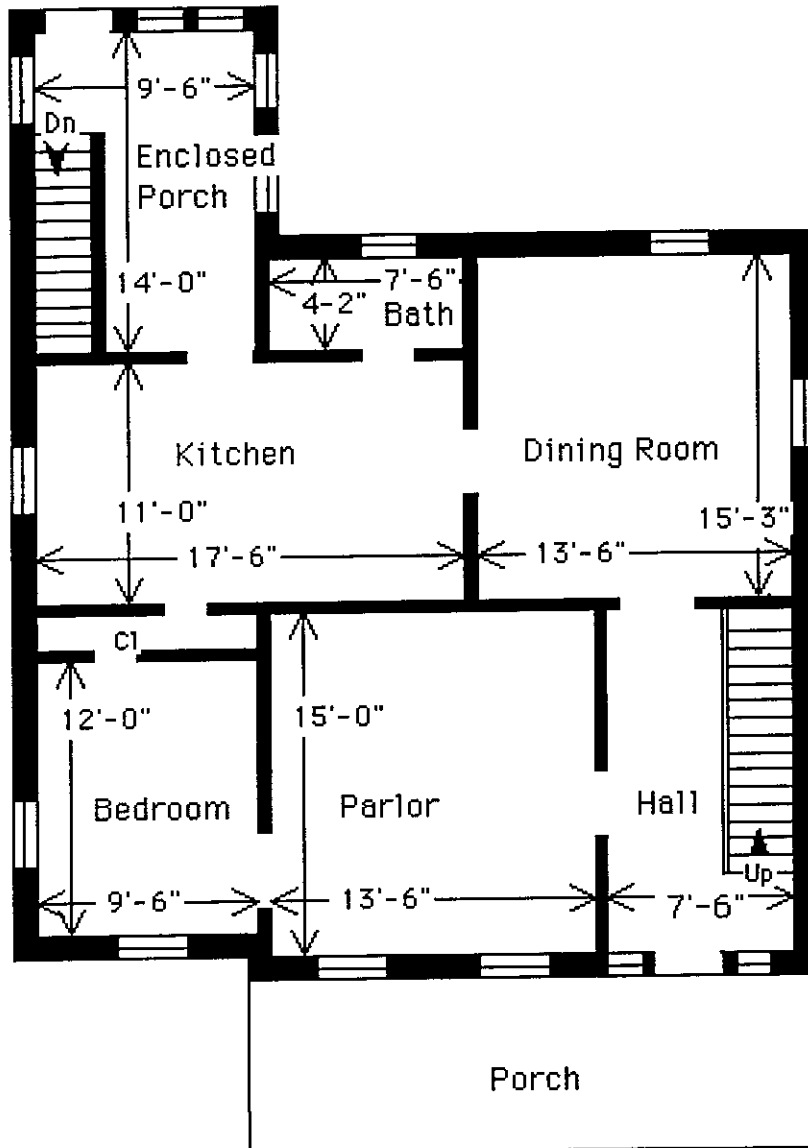
Please refer to the Multiple Property Documentation Form "Architectural and Historic Resources of Vermont, Illinois" for references.

Verbal Boundary Description

The property being nominated is described as Lots number 13 and 14 in Saunders Addition to the town, now village of Vermont, situated in the County of Fulton and State of Illinois.

Boundary Justification

The boundary includes the house and surrounding land historically associated with the Lucinda Hunter House and that maintain historic integrity.



Lucinda Hunter House

First Story

▼ North

ILLINOIS, ADAMS COUNTY, Fall Creek Stone Arch Bridge, 1.2 mi. NE of Fall Cr.--Payson Rd., across Fall Cr., Payson vicinity, 96001282, LISTED, 11/07/96

ILLINOIS, FULTON COUNTY, Chipman, Edith, House, 201 W. 3rd St., Vermont, 96001290, LISTED, 11/07/96 (Vermont, Illinois MPS)

ILLINOIS, FULTON COUNTY, Durell, William Franklin and Rebecca, House, 408 W. 5th St., Vermont, 96001292, LISTED, 11/07/96 (Vermont, Illinois MPS)

ILLINOIS, FULTON COUNTY, Hamer, Edward, House, 200 W. 2nd St., Vermont, 96001293, LISTED, 11/07/96 (Vermont, Illinois MPS)

ILLINOIS, FULTON COUNTY, Hamer, Patterson, House, 405 W. 5th St., Vermont, 96001287, LISTED, 11/07/96 (Vermont, Illinois MPS)

ILLINOIS, FULTON COUNTY, Hoopes, William, House, 204 N. Liberty St., Vermont, 96001285, LISTED, 11/07/96 (Vermont, Illinois MPS)

ILLINOIS, FULTON COUNTY, Hunter, Lucinda, House, 101 E. 8th St., Vermont, 96001286, LISTED, 11/07/96 (Vermont, Illinois MPS)

ILLINOIS, FULTON COUNTY, McCormick, Charles Emmor, House, 712 W. 3rd St., Vermont, 96001284, LISTED, 11/07/96 (Vermont, Illinois MPS)

ILLINOIS, FULTON COUNTY, Mershon, Joab, House, 507 W. 5th St., Vermont, 96001294, LISTED, 11/07/96 (Vermont, Illinois MPS)

ILLINOIS, FULTON COUNTY, O'Connell, Daniel, House, 115 N. Union St., Vermont, 96001288, LISTED, 11/07/96 (Vermont, Illinois MPS)

ILLINOIS, FULTON COUNTY, Page, Henry H., House, 221 N. Union St., Vermont, 96001289, LISTED, 11/07/96 (Vermont, Illinois MPS)

ILLINOIS, FULTON COUNTY, Ross, Harvey Lee, House, 602 S. Main St., Vermont, 96001295, LISTED, 11/07/96 (Vermont, Illinois MPS)

ILLINOIS, FULTON COUNTY, Snowden, Elsworth, House, 504 W. 3rd St., Vermont, 96001283, LISTED, 11/07/96 (Vermont, Illinois MPS)

ILLINOIS, FULTON COUNTY, Stapleford--Hover--Whitney House, 401 N. Main St., Vermont, 96001291, LISTED, 11/07/96 (Vermont, Illinois MPS)

ILLINOIS, WHITESIDE COUNTY, Sterling Masonic Temple, 111--113 W. 3rd St., Sterling, 96001279, LISTED, 11/07/96

MISSISSIPPI, ALCORN COUNTY, Rienzi Commercial Historic District, Jct. of Front and Main Sts., Rienzi, 96001312, LISTED, 11/07/96

MISSISSIPPI, HINDS COUNTY, Holly Grove Plantation House, 1056 Old Bridgeport Rd., Bolton vicinity, 96001313, LISTED, 11/07/96

NORTH DAKOTA, WALSH COUNTY, Grafton State School, 700 6th St., W., Grafton, 96001191, LISTED, 11/06/96

PENNSYLVANIA, BERKS COUNTY, Livingood House--Stryker Hospital, 417--419 Walnut St., Reading, 96001195, LISTED, 11/07/96

PENNSYLVANIA, CHESTER COUNTY, Fairville Historic District, Kennett Pike between Fairville Rd. and Hickory Hill Rd., Pennsbury Township, Kennett Square vicinity, 96001200, LISTED, 11/07/96

PENNSYLVANIA, ERIE COUNTY, Villa Maria Academy, 819 W. 8th St., Erie, 96001193, LISTED, 11/08/96

PENNSYLVANIA, LANCASTER COUNTY, Reyer, Peter and Catherine, Farmhouse, Trout Run Rd., W of jct. with PA 272, Ephrata, 96001314, LISTED, 11/07/96 (Historic Farming Resources of Lancaster County MPS)

PENNSYLVANIA, MERCER COUNTY, August, Wendell, Forge, 620 Madison St., Grove City, 96001192, LISTED, 11/07/96

RHODE ISLAND, WASHINGTON COUNTY, Westerly Armory, Railroad Ave., W of downtown Westerly, Westerly, 96001322, LISTED, 11/07/96

SOUTH CAROLINA, CHARLESTON COUNTY, Coming Street Cemetery, 189 Coming St., Charleston, 96001223, LISTED, 11/05/96

SOUTH DAKOTA, CAMPBELL COUNTY, Pollock Depot, Ave. A, SW of SD 10, Pollock, 96001229, LISTED, 11/08/96

TENNESSEE, CARTER COUNTY, Butler House, 206 Main St., Hampton, 96001315, LISTED, 11/07/96

TENNESSEE, SEQUATCHIE COUNTY, Douglas Coal and Coke Company Clubhouse, 512 Mountain View, Dunlap, 96001317, LISTED, 11/07/96

TEXAS, POTTER COUNTY, Northwest Texas Hospital School of Nursing, 2209 W. 6th Ave., Amarillo, 96001234, LISTED, 11/07/96

UTAH, SUMMIT COUNTY, Park City High School Mechanical Arts Building, 1167 Woodside, Park City, 96001324, LISTED, 11/07/96 (Public Works Buildings TR)

UTAH, WASHINGTON COUNTY, Parunuweap Canyon Archeological District, Address Restricted, Springdale vicinity, 96001235, LISTED, 11/07/96

VERMONT, BENNINGTON COUNTY, Wait Block, Near jct. of Main and Bonnet Sts., Manchester Center Village, Manchester, 96001327, LISTED, 11/07/96

VERMONT, FRANKLIN COUNTY, Fairfield Street School, 78 Fairfield St., St. Albans, 96001326, LISTED, 11/07/96 (Educational Resources of Vermont MPS)

VERMONT, WINDHAM COUNTY, Grout, Lewis, House, 382 Western Ave., Brattleboro, 96001328, LISTED, 11/07/96

VIRGINIA, CHARLOTTESVILLE INDEPENDENT CITY, Lewis Farm, 1201 Jefferson St., Charlottesville (Independent City), 82001807, ADDITIONAL DOCUMENTATION APPROVED, 11/07/96 (Charlottesville MRA)

VIRGINIA, CLARKE COUNTY, Long Marsh Run Rural Historic District, Roughly bounded by WV state line, VA 608, VA 612, VA 7, and VA 653, Berryville vicinity, 96001173, LISTED, 11/04/96

VIRGINIA, FRANKLIN COUNTY, Waverly, N side of VA 122, 2 mi. NE of jct. with VA 116, Burnt Chimney vicinity, 96001329, LISTED, 11/07/96